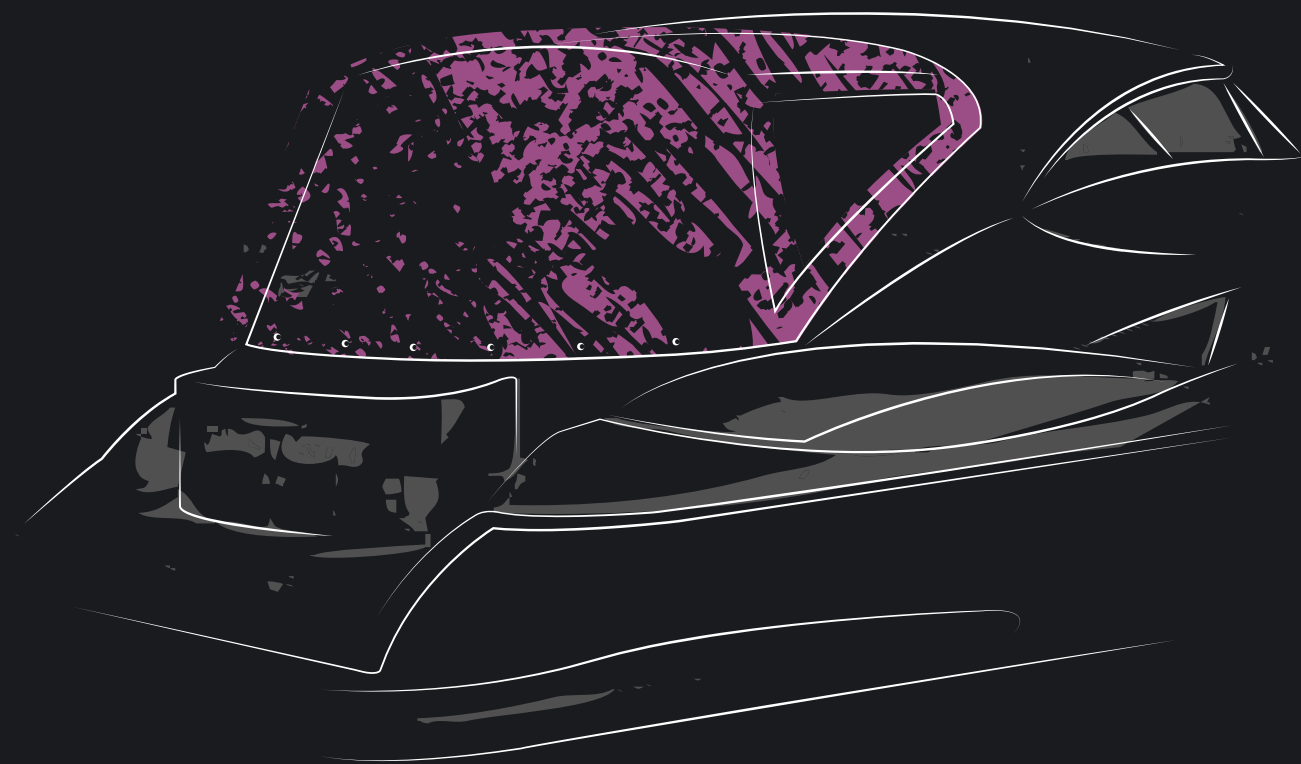


SUNBRELLA

PLUS



DESIGN + PERFORMANCE™

SUNBRELLA.COM

Dickson-Constant RCS Lille Métropole 381 347 970 - Edition 10/2017 - Sunbrella® is a registered trademark of Glen Raven, Inc.
*see warranty conditions on www.sunbrella.com - **voir conditions générales de garantie sur www.sunbrella.com



OVERALL CHARACTERISTICS / CARACTÉRISTIQUES GÉNÉRALES

Composition	100% Sunbrella® acrylic 100% acrylique Sunbrella®
Finish Finition	Resin based anti-fungi coating, water and UV resistant Enduction anti-fongique à base de résines, imperméable et résistante aux UV
Weave Armure - ISO 7211-1	Canvas Toile
Weight / Poids - ISO 3801	320 g/m²
Width / Laize - EN 1773	152 cm

FABRIC STRENGTH / RÉSISTANCE DU TISSU

Oil-repellent properties Oléofugation - ISO 14419	5/8
Tensile strength Résistance rupture - ISO 13934-1	Warp 140 daN - Weft 130 daN Chaîne 140 daN - Trame 130 daN
Elongation at break Allongement à la rupture - ISO 13934-1	Warp 30% - Weft 15% Chaîne 30% - Trame 15%
Tear strength Résistance déchirure - ISO 13937-1	Warp 3,3 daN - Weft 2,5 daN Chaîne 3,3 daN - Trame 2,5 daN
Schmerber - ISO 811	1000 mm
Spray test - ISO 4920	4-5/5

Air permeability Perméabilité à l'air - ISO 9237	2,5 l/m²/s
---	------------

COLOUR RESISTANCE / RÉSISTANCE DES COULEURS

Colour fastness UV Solidité coloris UV - ISO 105 B02	7-8/8
Colour fastness weather condition Solidité coloris intempéries - ISO 105 B04	4-5/5
Colour fastness dry friction Solidité coloris frottement sec - ISO 105X12	5/5
Colour fastness wet friction Solidité coloris frottement humide - ISO 105X12	5/5

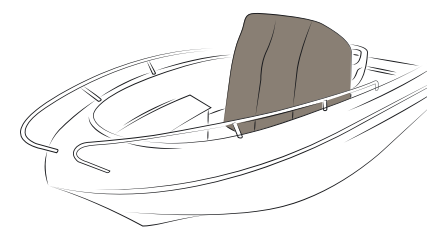
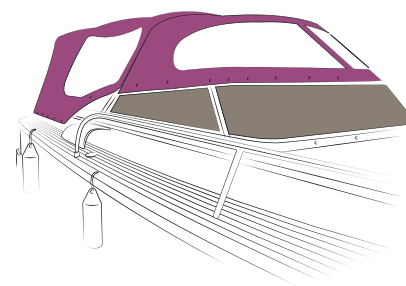
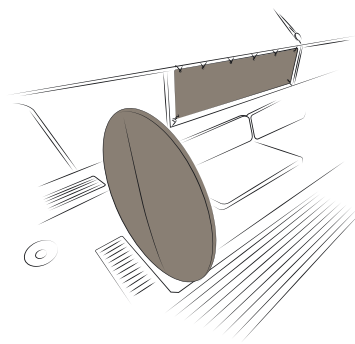
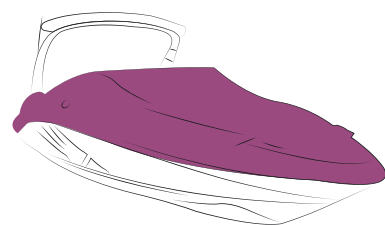
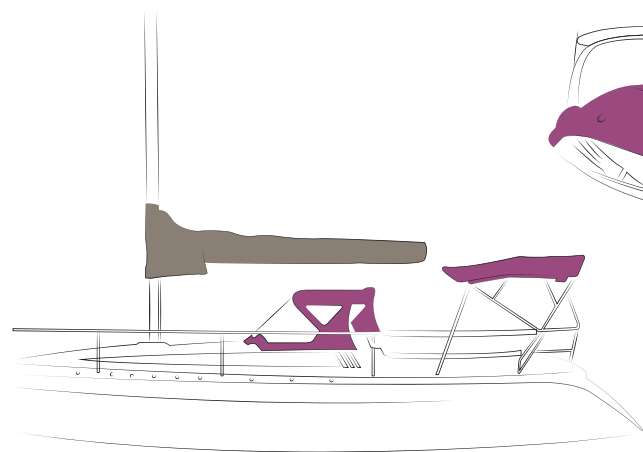
USE / UTILISATION

Roll length / Longueur de coupe	50 ml
Recommended use Utilisation recommandée	Spray hood, bimini, sun awning, dodgers, camper & cockpit enclosures, console cover, external windshield cover, winter cover, wheel & winch cover, mainsail cover Capote, bimini, taud de soleil, cagnards, fermetures arrières, fermetures de cockpit, housse de console, housse de pare-brise, housse d'hivernage, housse de barre à roue & de winch, housse de grand voile
Guarantee / Garantie	5 years* / 5 ans**

☀️ UPF 40	This pictogram indicates that the fabric filters 97,5% of UVB rays / Ce picto vous indique que la toile filtre 97,5% des rayons UV.
☀️ UPF 50+	This pictogram indicates that the fabric filters more than 98% of UVB rays / Ce picto vous indique que la toile filtre plus de 98% des rayons UV

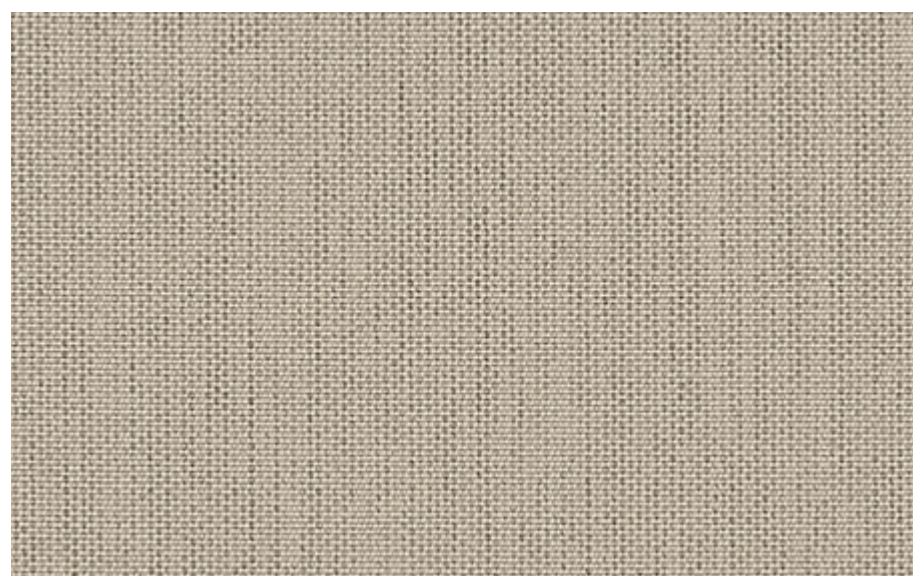


The values of this product may vary depending on a tolerance variation of +/- 5 %
Les valeurs de ce produit peuvent varier selon une tolérance de +/- 5 %.



Recommended
Recommandé

Possible



Papyrus
SUNTT P055 152



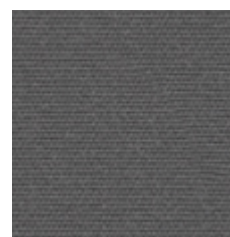
DIMENSIONAL
STABILITY
Stabilité dimensionnelle



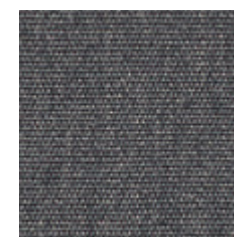
WATER
RESISTANCE
Imperméabilité



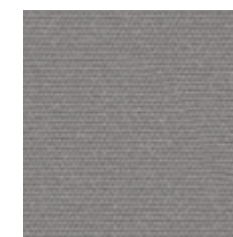
BREATHABLE
COMFORT
Respirant



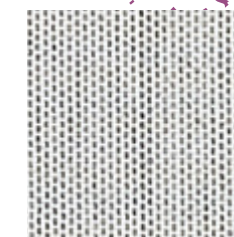
Charcoal Grey
SUNTT 5049 152



Flanelle
SUNTT 5087 152



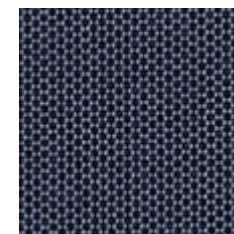
Cadet Grey
SUNTT 5530 152



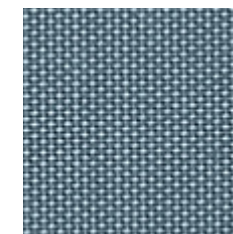
Marble
SUNTT P052 152



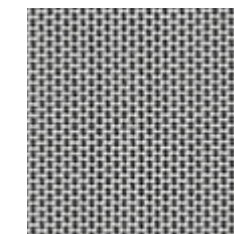
Titanium
SUNTT P054 152



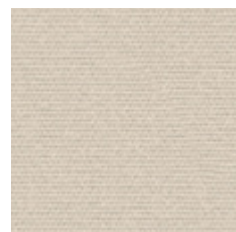
Abyss
SUNTT P058 152



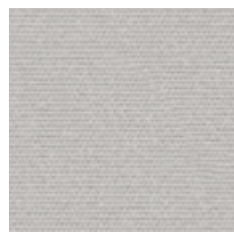
Celestial
SUNTT P057 152



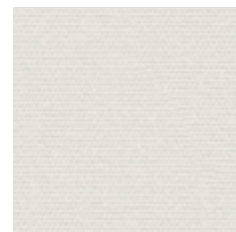
Steel
SUNTT P053 152



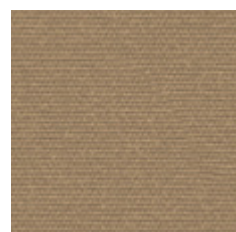
Oyster
SUNTT 5030 152



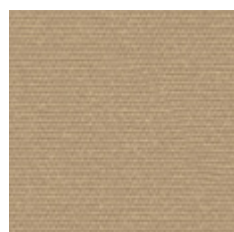
Silver
SUNTT 5035 152



Natural
SUNTT 5020 152



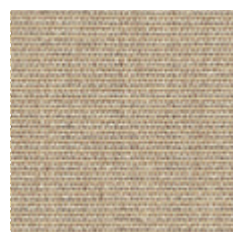
Toast
SUNTT 5528 152



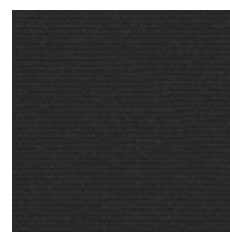
Dune
SUNTT 5026 152



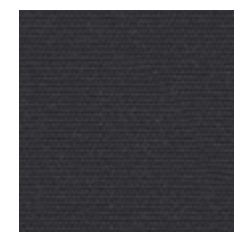
Beige Chiné
SUNTT 5089 152



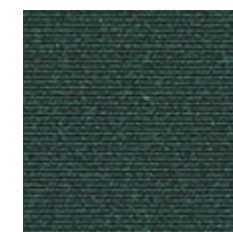
Flax
SUNTT P017 152



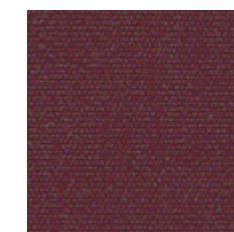
Jet Black
SUNTT 5032 152



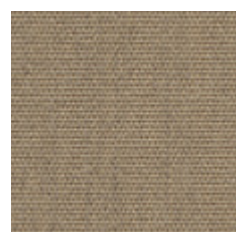
Dark Navy
SUNTT 5058 152



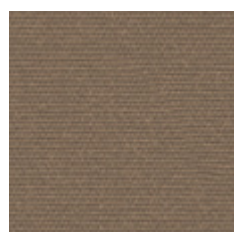
Forest Green
SUNTT 5040 152



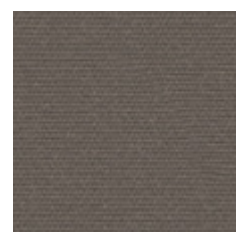
Burgundy
SUNTT 5034 152



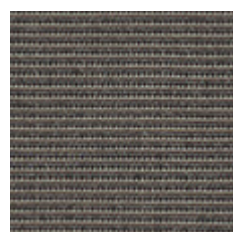
Heather Beige
SUNTT 5572 152



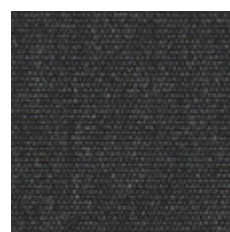
Hemp Beige
SUNTT 5048 152



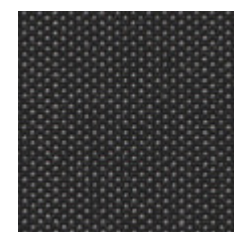
Taupe
SUNTT 5548 152



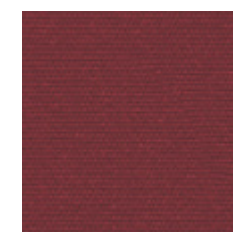
Dark Smoke
SUNTT 5085 152



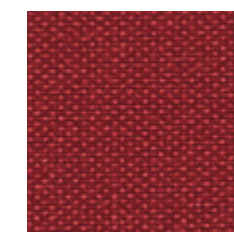
Graphite
SUNTT 5082 152



Charcoal Piqué
SUNTT 5088 152



Crimson Red
SUNTT P015 152



Pepper
SUNTT P056 152